



WHAT'S INSIDE?

About us	3
About Westcliff University	4
Greetings from the Executive Chairman.....	5
Greetings from the Principal.....	6
Management Committee.....	7
Research Committee.....	8
Vision / Mission / Values.....	9
Core Competencies.....	10
Research Based Learning at PBS.....	11
Academic Programs.....	13
Master of Business Administration.....	16
MBA Concentrations.....	17
Bachelor of Business Administration.....	19
BBA Concentrations.....	20
Master of Science in Information Technology.....	23
MScIT Concentrations.....	24
Bachelor of Science in Information Technology.....	25
BScIT Concentrations.....	26
Department of Continuing Education.....	28
Guest Lectures.....	29
PBS Through the Eyes of the Faculty.....	30
Industrial Visit.....	34
PBS Faculty List.....	35
PBS Sports.....	37
PBS IT Conclave.....	38
Presidential Innovation Lab.....	39
Presidential Centre for Excellence in Business and Technology.....	39
Franklin Covey Trainings.....	40
Job Placement Cell at PBS.....	41
PBS Tour.....	42
PBS Gala.....	43
Graduation.....	44
FAQs.....	45



ABOUT US

3

Based in Thapagaun, New Baneshwor, Kathmandu, Presidential Business School (PBS) is an academic institution founded in 2011 AD, with the objective of establishing itself as a model center for quality education in Nepal. PBS is affiliated to Westcliff University, USA.

Presidential's unrelenting drive for excellence in education obliges it to promote quality education in the inter-national academia through creative conception of managerial philosophy rather than through reproduction of received knowledge. Moreover, our persistent anxiety caused by the outflow of the brilliant minds aspiring for foreign degrees is another reason behind the founding of PBS, which, therefore, in liaison with Westcliff University, has taken an auspicious initiative to bring home and award international degrees in Business and Information Technology to such aspirants domestically.

Proud of its exceptional human resources (a fused make-up of brilliant faculty and management visionaries), state-of-the-art facilities, and rare international exposure, the school also offers an exclusive access to corporate practices and situates PBS students in an environment that molds them into professional aces. The school, in fact, viably meets this end with significant support of the leaders from the local reputed businesses and corporate houses.

At present, Presidential's focus is exclusively on the School of Business and School of Technology, but the school does envision a rich and varied addition of Departments/Schools of global standards conferring accredited degrees in near future. The business and media houses and other partners (both national and international) will also be working together to crystallize this vision for the extension of the said project.



September 9, 2021

The year 2021 marks the 5th anniversary of the partnership between Westcliff University and Presidential Business School (PBS). PBS has been successfully supporting the growth and learning of Nepal-based students seeking Westcliff's US-accredited degrees in business, and students in Nepal will soon be able to pursue Westcliff's undergraduate and graduate programs in information technology.

The collaboration between Westcliff and PBS provides Nepal residents a pathway to a quality education from a US-based institution with additional academic support from the dedicated staff and faculty at PBS. The degrees offered are in the relevant fields of business and technology with a variety of concentrations available to meet the needs of a diverse student body. The ongoing outcomes of the partnership between Westcliff and PBS contribute to the development of a worldwide academic community prepared to meet the challenges of tomorrow on a local or global scale.

Westcliff University, located in Irvine, California, USA offers undergraduate and graduate degrees and certificate programs in Business, Education, Law, Computer Science, and Information Technology. The university is regionally accredited by the Western Association of Schools and Colleges (WASC) Senior College and University Commission (WSCUC) and the business programs are also accredited by the Accreditation Council for Business Schools and Programs (ACBSP). The university has enrollments from students from over ninety-five different countries and has been offering quality degrees for nearly 30 years.

Best regards,

Julie Ciancio, PhD, MBA
Vice President of Academic Affairs
Chief Academic Officer

ABOUT WESTCLIFF UNIVERSITY

Westcliff University was established to provide quality education for students wishing to enter the expanding fields of Business, Information Technology and Education. Westcliff received its initial approval with the Bureau for Private Postsecondary Education in 1993. Westcliff is comprised of a College of Business, College of Education, College of Technology & Engineering, and Western State College of Law. Westcliff University offers graduate and undergraduate certificates and degree programs intended to prepare students for immediate entry and advancement in their respective industries. While some schools only teach theoretical concepts, the programs at Westcliff University prepare students for the practical and theoretical elements required in the job market today.

All programs at Westcliff are designed to be convenient, flexible, and affordable. Westcliff University prepares students for personal, professional, and academic success with innovative, up-to-date, and of high quality programs. The university has guidance and expertise from members of its faculty, Program Advisory Council, and Board of Trustees that includes key leaders from organizations such as Google, Hyundai, Kia, Asurion, Deloitte, Hewlett Packard, Hitachi Capital, Cox Communications, CATESOL, as well as other local and national businesses and organizations.

Westcliff University, USA. Westcliff University is accredited by the WASC Senior College and University Commission (WSCUC), a regional accreditation body recognized by the U.S. Department of Education (ED), the Council on Higher Education Accreditation (CHEA), and a private nonprofit national organization that coordinates accreditation activity in the United States. Westcliff University College of Business is globally accredited by Accreditation Council for Business Schools and Programs (ACBSP), a standard of excellence with an accreditation process based on the Baldrige Education Criteria for Performance Excellence. The accreditation focuses on recognizing teaching excellence, determining student learning outcomes, and a continuous improvement model.

Institutions with programs accredited by ACBSP are committed to continuous improvement that ensures their business program will give students the skills employers want.



GREETINGS FROM THE EXECUTIVE CHAIRMAN

I would like to take this opportunity to welcome you all to Presidential Business School. I am proud to be part of this college and hope that you also share the same sentiment once you are part of the PBS family.

PBS has a very stimulating, vibrant environment, which is but a result of a heterogeneous make-up of students from a wide variety of backgrounds with a singular pursuit of rewarding international degrees. Always supportive and friendly, we do embrace the fact that each student is a unique individual and that such distinctiveness has to be preserved.

In fact, Presidential Business School is founded with a goal to offer unparalleled educational service, and the right orientation to the aspirant new entrants. The goal seems reachable with our team of expert faculty members and experienced educationists who are on par with the international ones. Furthermore, with a Westcliff University's degree, here in Nepal, the job seems already half-done!

I must also point out the fact that during this crucial stage of choosing careers, especially in this cut-throat competitive era in the global level, students often find themselves confused. Yet, bright careers await for those who dare to dream, act upon their dreams and focus on it with unflinching determination and dedication.

Our students will also, upon completion of their course, witness their chances of employment increased considerably—both locally and globally too! We have a flexible approach designed to suit both your personal and professional commitments.

Besides, our pioneering work-based learning programs make it possible for your academic work to be combined with your chosen career. We are confident that the programs outlined in this prospectus provide a sound, quality-assured learning experience.

Once again, I keenly look forward to welcoming you here at PBS.

Laxman KC
Executive Chairman

5





GREETINGS FROM THE PRINCIPAL

Welcome to Presidential Business School. It is a privilege and honor to be a leading team member of this outstanding institution of higher studies.

The growth PBS has achieved in the years since its inception and the impact and contribution it has been able to make in the higher education sector in Nepal is significant. With affiliation to Westcliff University, PBS has brought home the globally recognized accredited American degrees for aspiring students. Both of our Business and Information Technology programs (undergraduate and graduate) has practical, innovative and technologically advanced curriculum designed to impart knowledge, skills, attitude and competencies to our students to be the best fit for their professional career and society as a whole. We are proud of our alumni and their achievements; who are now part of esteemed organizations in various sectors like banking, insurance, academic, hospitality, marketing to name a few. Some are successfully leading their entrepreneurial venture. Our unparalleled faculty expertise and resources, their support and collaboration make the learning experience at PBS enriching for students.

We always strive to lead, inspire and innovate in the academic ecosystem. And our gratitude to everyone who have joined us in this mission.

I am proud and honored to be a member of PBS and hope you will feel the same. Come join us.

Kalpana Gurung
Director/Principal





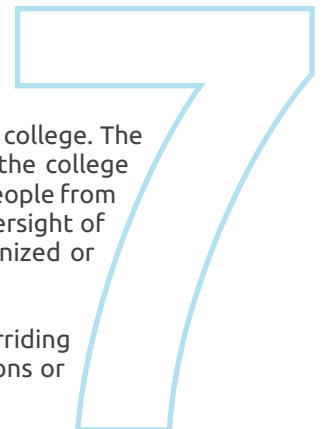
L - R: Dr. Suresh Pokharel (Director, IT Programs), Mr. Ashwin Satyal (Senior Program Manager), Mr. Rajesh Thapa (Head, Account Dept.), Mr. Paras Dotel (Manager, CFE & Innovation Lab), Ms. Dolma K. Sherpa (Manager, IT Program), Mr. Arya Bhattarai (Head, Writing Center)

L - R: Ms. Smarika Khatri (Manager, BBA Program), Mr. Laxman KC (Executive Chairman), Ms. Kalpana Gurung (Director/Principal) Mr. Kshitiz Puri (Head, Business Development & Corporate Relations)

MANAGEMENT COMMITTEE

The **PBS Management Committee** is a comprehensive body of people in executive capacity to engage in and oversee the overall academic and administrative affairs at the college. The committee liaises between the college authority including the board of directors and the college administration to facilitate the day-to-day operation of the college; in fact, it comprises people from across all the three aforesaid categories including some faculty representatives. The oversight of the Committee also extends beyond to monitor the co-/extra-curricular activities organized or participated in by PBS.

The **PBS Management Committee** has its own discretionary power and is capable of overriding the decision of the College Administration while, on other occasions, awaiting instructions or endorsement from the College Authority.



RESEARCH COMMITTEE

The **PBS Research Committee** is a body of veteran academicians that are charged with the authority of both determining contemporary research needs and delineating or structuring the school's research projects clearly or/and robustly. The Committee also reserves the oversight of the quality control of students' research works (both modest and comprehensive) and of the school's action plan for such research activities integral to the partially-acquired academic insights from course-work and lectures.

An autonomous body, the Research Committee is appointed by the School Board of Directors and recognized by the University to work largely at its own discretion in furthering standard research practices and goals-both domestically and otherwise.





VISION

Presidential Business School aspires to become one of the best Academic Institution in the South Asia, known for providing experiential learning environment to build the next generation human resources that would inspire, innovate and lead.

MISSION

- To provide learning environment where individuals are inspired and empowered to become responsible managers, entrepreneurs, leaders and researchers in different management fields.
- To enhance critical thinking and decision making skills of students through practical, research based and innovative academic programs.
- To promote entrepreneurship through innovation and contribute in nation's development by creating employments.



VALUES WE PURSUE

- Honesty
- Integrity
- Inquisitiveness
- Innovation
- Commitment to Quality
- Inclusiveness
- Mutual Respect
- Personal Accountability
- Social Responsibility



10



CORE COMPETENCIES

- Written & Oral Communication
- Interpersonal Skills
- Critical Thinking
- Research and Analysis
- Information Literacy
- Quantitative Reasoning
- Reflective
- Innovation
- Team Work & Leadership

I still remember convincing my parents to join an American Business School instead of a college running under Nepali Boards, and today I am really glad that I did. I have had a great experience of studying and learning at Presidential Business School with extremely knowledgeable, supportive, approachable, and inspiring professors. Their dedication to bringing the best out of every student, by helping them in every way possible helped us to not only develop strong academic but also our interpersonal, leadership, and critical thinking skills. In addition, access to varieties of online learning resources such as the Library and Information Resources Network and Writing Center, provide us an opportunity to conduct unlimited research and help us to overcome academic challenges.

Most importantly, along with learning and developing skills Presidential made me way more confident than I ever was, encouraging me to pursue my dreams.

Puja Maharjan - BBA, Spring 2016



RESEARCH-BASED LEARNING AT PBS

The true meaning of learning smartly consists in practical, analytical, and research-based learning guided by our veteran academicians who can instill motivation in our students to learn differently but usefully. We, therefore, emphasize on enabling an environment rather than dictating the process. Faculty members serve as facilitators rather than teachers who encourage students to take initiative in their learning. This is because we emphasize on conceptual clarity, and on application of knowledge and skills to the problem-solving of the real world.

Lecture sessions at PBS are characteristically interactive with the faculty members facilitating the learning process so that students automatically delve deep into the subject under study. The discussions in the class are complemented with case analysis and presentations, reviews and feedback of presentation, robustly participatory research-work

involving studies of real organizations, and internships. One most extensively used tool is the research-based-action learning approach. It enhances learning process by enabling the acquisition of application skills.

This process stresses active learning and experimentation, builds theoretical capacity for dialogue and enhances skills in problem solving. Information gathering and critical analysis are natural products of this approach. We emphasize the need of an up-to-date learning in this rapidly changing world because knowledge becomes obsolete as reality changes. The ability to work together, lead, follow, and understand others can only be enhanced if learning is not limited to the acquisition of knowledge but reaches beyond.



LEARNING APPROACHES AT OUR SCHOOL

- Class Participation
- Group Discussion
- Pair/ Group Work
- Quiz
- Review
- Audio/Visual Tutorials
- Online Discussion Forum
- Individual/Group Presentations
- Project/Research Work/Case Study
- Professional Assignment (PA)
- Comprehensive Learning Assessment (CLA)
- Fieldwork
- Guest Lectures
- Workshops & Trainings
- Conference/Seminars
- Internships at Corporate Houses





PBS is a great place to learn and explore things. Plenty of opportunities come on your way for you to grab them and help yourself to explore the real you. In PBS, I promise with a great experiences and excellent faculties to help you grow. Different events and workshops at PBS helped me to enhance my skill set and break free from my comfort zone. While you are here, with experienced faculties and people in the surrounding of PBS, you can build networks, grab opportunities to compete in the job market and you will be at your best.

Sital Kumar Sharma - BBA, Spring 2018

"Research-based learning teaches a lot of things to be a better person".

I take great pride in calling myself a PBSIAN. The college provides its students with practical knowledge and the best quality education with international teaching pedagogy. In fact, PBS has helped me to develop my research potentials, writing skills, and critical thinking ability. Being a shy girl from a small town who did not even know how to communicate well and how to face difficult situations, PBS taught me to be a confident. Bold enough to be able to communicate as a person and helped me in building my interpersonal and professional skills. PBS is the place that makes you realize who you are, what you love to do, where you fit in, and how you can achieve goals.

Abhilasha Lal - BBA, Spring 2016



ACADEMIC PROGRAMS

PBS offers undergraduate and graduate degrees in Management and Information Technology under the departments - School of Business and School of Technology respectively. The course curriculum at PBS are designed to promote academic research activities among students, thereby developing their critical thinking, problem identifying & solving skills, leadership skills, and enhance interpersonal skills. The rigorous evaluation and syllabus design ensures originality in students' work, conduct in-depth academic research, discourage plagiarism and establish objective consistency in evaluation via the grading rubrics.

SCHOOL OF BUSINESS

- Bachelor of Business Administration (BBA)
- Master of Business Administration (MBA)

SCHOOL OF TECHNOLOGY

- Bachelor of Science in Information Technology (BSciT)
- Master of Science in Information Technology (MSciT)



Pursuing an MBA at Presidential not only helped me analyze the value of working and studying in a culturally sophisticated environment but also helped to advance in my career. As a working professional, I found Presidential flexible in terms of time without compromising the quality of the study. As I had opportunities to engage with people from different backgrounds, the network of like-minded people supported me in every aspect of enhancing my social and professional life. Within a short period of time, the course enabled me to think critically and manage time effectively.

Shristi Pradhan - MBA, Fall 2019

13



I have spent the most crucial 6 years of my life doing BBA & MBA here at Presidential Business School. In these 6 years I had to make the most important decisions of life which would shape my future and Expert faculties helped me to make those decisions. Practical learning processes i.e Assignment, presentation, field visits, group works, Extracurricular activities here at PBS helped me to develop the important professional skills in me that helped me for making the important professional decisions.

It's flexible timing for the job holders and support from the college management helped me to fulfill the professional commitment at the office in these 6 years without any worries. Today I stand here as a proud entrepreneur running two businesses, Bakery and trading , where the theoretical knowledge learned at college and practical knowledge learned in offices has been very helpful to run my businesses.

I got a very good exposure of the practical world by participating in different programs organized by college such a field visits , seminars , guest speakers sessions, Story Yellers , conclaves , inter and intra college competitions etc. Today I feel proud about my decision of choosing presidential business school for my bachelor's and Master's Studies.



Sushma Sharma - MBA, Fall 2018

Being a student Athlete can be tough. A life of an average student on campus can be stressful. Sleep loads can be altered due to workloads, events or meetings. Now add a practice schedule, travel and games life can be much more difficult. Student athletes may find hard to manage their time between assignment deadlines, exams, events, games, Practice, Gym, Recovery, and Games etc. Some don't know what it like is to wake up at 6 am for a presentation after 10 hours of road trip with your team. In addition, missing 5-6 class per semester is normal for a Student athlete due to games and travel because of which it is negatively reflected on their exams or assignments, This also the main reason why many student athletes call it quits and don't complete their Bachelors program. However, with PBS's Flexible class schedules where students get 2-3 days of off days it can minimize lots of stress off them.

Moreover, The teachers here are understanding as well supportive and facilitate an environment where a student athlete can take his academic career and sports career hand in hand for example in 2018 I got selected to play for men's national team which was for the 18th Asian Games, Indonesia and I needed a month holiday to be in a close camp but at that time as far as I remember I had my Operations management and Psychology class running so I consulted with the college management who gave me positive advice they told me to withdraw the course and attend it in next session because of which I got to be a part of Nepal's first ever men's team to participate in Asian games which is also known as 2nd most biggest sporting event after Olympics and in the other hand I also completed by Operations management and Psychology class in the next session.

So for a Student athlete like me I would honestly suggest PBS.



Nischal Maharjan - BBA, Spring 2016





MASTER OF BUSINESS ADMINISTRATION

MBA Philosophy

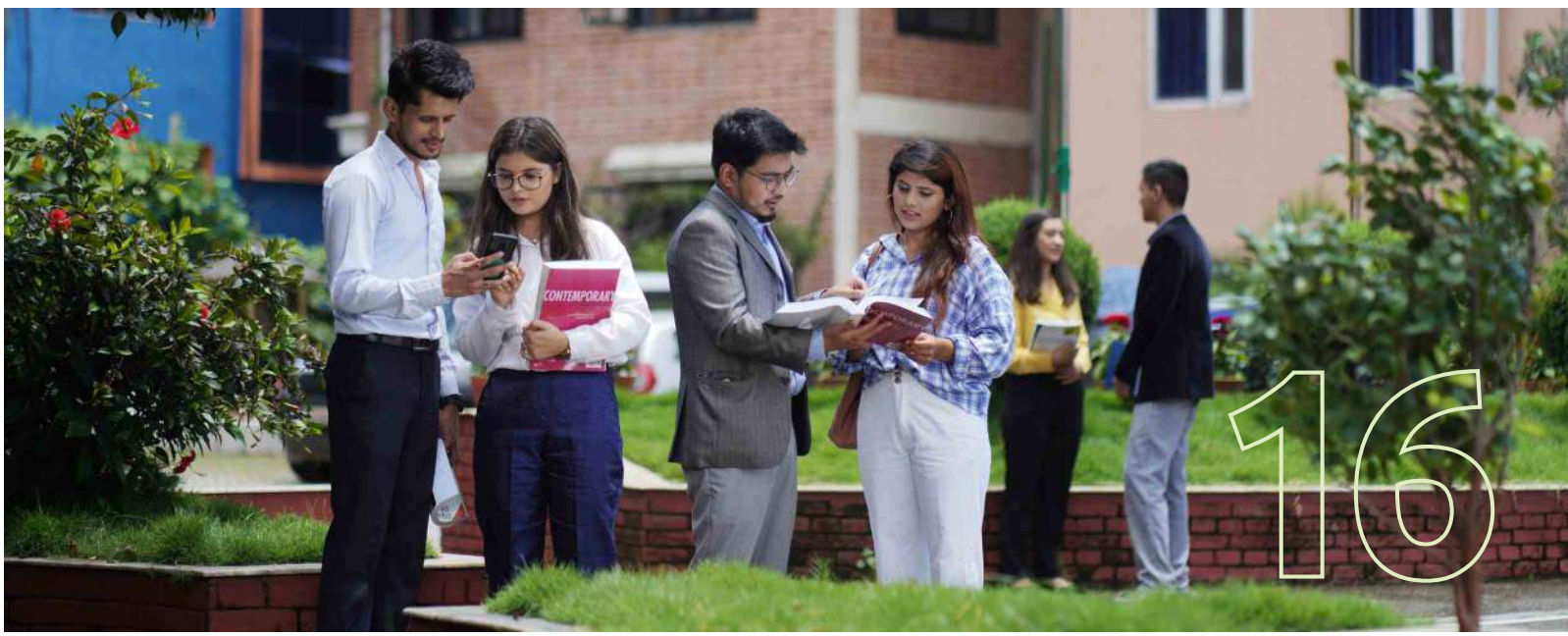
MBA is the world's most valuable business qualification. It is a powerful embodiment of some of the most desirable attributes in any executive: intelligence, innovation and determination. The Master of Business Administration curriculum includes a whole range of exciting courses.

The goal is to develop motivation in students to appreciate the wisdom of acquiring lifelong learning; to equip students with well developed analytical, conceptual, quantitative human skills; to nurture positive attitude and self-confidence; and to develop the ability in leading and working in teams, and to shoulder responsibility and understand business ethics.

MBA at Presidential

The PBS MBA conceived primarily to suit the need of the working professionals is a 2-year, 60-credit program structured to allow enough flexibility for (working) students. Equally competitive with the existent full-time courses within the domestic curricula from diverse national universities, this Westcliff University degree offered by PBS is an internationally-recognized degree, which is hybrid in nature. While it adheres to a global standard of curriculum to garner international recognition, it also integrates local business/ managerial values to produce human resources that cater to the need of the domestic market in addition to the international one.

The inductive learning model of MBA at PBS transcends the confines of facts and theories—a process that teaches individuals not only how to manage organizations, but also how to continually grow and learn throughout life. The PBS MBA, in fact, blends theory with practical applications, consolidated further by insightful (guest) lectures, thorough examinations of real-life cases, research work, field studies, project works, workshops and seminars, presentation sessions, and training programs. Moreover, the program keeps itself abreast of the current trends, hence, fashioning the careers and honing the skills of future CEOs, managers and otherwise through as much empirical learning as through abstract theories. Students also benefit from an array of elective specializations. Some major areas of specialization are explored on the basis of the current international job market trends and needs.



CONCENTRATIONS

17



MBA MARKETING

This concentration prepares students with the knowledge and tools they need to be a marketing department director, manager, or officer. The program emphasizes the global aspects of marketing, the preparation of various specialized plans for marketing, sales, and advertising and the relationship between the marketing department and other departments of the firm.

MBA FINANCE

The financial management program is designed to provide both a sound theoretical and a conceptual and practical framework for financial managers. Special emphasis is placed on growth and diversification policies, evaluation, and management of securities portfolios, investment banking and merger strategies, analysis of foreign exchange rate movements, formulation of plans to reduce foreign exchange risk exposure, and case and/or research projects dealing with contemporary financial issues.



MBA ENTREPRENEURSHIP

Innovation and flexibility are the secrets to success in today's business marketplace. The MBA Entrepreneurship fosters the enterprising spirit and managerial autonomy that businesses rely on to stay competitive in this dynamic economy.

MBA students who specialize their program in Entrepreneurship learn how successful entrepreneurs gain access to the resources needed; launch their venture; grow their business; and, finally, exit their business.

MBA ORGANIZATIONAL MANAGEMENT

The purpose of the MBA Organizational Management is to provide students with the skills and practical and theoretical concepts that will assist them when seeking promotions or positions in management and supervision. This program is designed to prepare diverse adult learners to become effective, change-oriented leaders in an international society by adding distinctive and challenging curricula.



MBA SUPPLY CHAIN MANAGEMENT

The MBA Supply Chain Management is focused on the study of the movement and storage of raw materials, work-in-process inventory, and finished goods from point of origin to point of consumption, based on efforts of multiple organizations. Students will learn how to maximize customer value and achieve a sustainable competitive advantage. Emphasis is placed on product development, sourcing, production, and logistics, as well as the information systems needed to coordinate these activities. It focuses on the overall process of maximizing customer value to achieve a sustainable competitive advantage.



18



I received my BBA from TU and graduated with honors. I was offered an assistant position in a BPO company as soon as I graduated. I accepted the position, but I also wanted to pursue my Master's Degree, specifically an MBA. Additionally, I wanted to learn about international teaching methodology because I am now a global citizen. Then a friend recommended PBS to me for my MBA. I visited the campus, spoke with the administrators, and was confident that this was it. I am now an MBA graduate from PBS with a CGPA of 4 out of 4, and yes, I am still employed by the same company, but now as a senior management. I became Mr. Fresher. Interestingly, no one has been crowned Mr. Fresher after me due to covid, I believe I am still Mr. Fresher. I took part in all of the college's events, including dancing, cricket, and other sports week games.

I also competed in a Unilever Case Study PPT competition on behalf of PBS. I also took part in the Hultz Prize. My point here is to emphasize on the enabling environment that PBS provides. As a result, if you are considering PBS for your future education, I strongly advise you not to be concerned. The institution provides you with a very enabling environment that not only prepares you for employment and entrepreneurship, but also helps you develop into a multifaceted talent. It is only up to you to be sincere and put forth the bare minimum of effort.

Pravash Rai - MBA, Spring 2019 (Head of Human Resources, Shine Resunga Development Bank)



BACHELOR OF BUSINESS ADMINISTRATION

BBA Philosophy

BBA is another world's valuable business qualification that integrates academic rigor with real-life problem-solving approaches, which ultimately equips the BBA graduates with the entrepreneurial know-how to excel at business and management. In other words, the program fuses business/management theories with day-to-day business issues.

Students at this level are trained to explore fundamental business concepts while they simultaneously develop an awareness of ethically and socially responsible business practice. In sum, the BBA program produces team leaders capable of working effectively in a dynamic business world that is burgeoning by the day with its integrated economy.

19

BBA at Presidential

The PBS BBA is a 4-year, 120-credit program structured and built to produce middle-level managers/ business leaders. Equally competitive with the existent courses within the national curricula at universities here in Nepal, this Westcliff University degree offered by PBS is an international degree, which adheres to a global standard of curriculum to garner international recognition while it still embraces local business/ managerial values. The school believes this transnational fusion embodied in the program produces human resources that not only cater to the need of both the domestic and global markets but also thrive individually and professionally.

Put another way, the PBS BBA prepares graduates for a wide range of managerial positions in business and non-profit organizations with special emphasis on crucial areas of specialization to meet the market need. The BBA students acquire fundamental as well as practical professional skills in all phases of business including decision-making and problem-solving capacities. Further, this undergraduate program prepares individuals to plan, organize, direct, and control the functions and processes of a firm or an organization.

The program includes instruction in management theory, human-resource management and behavior, accounting and other qualitative methods, purchasing and logistics, organization and production, and marketing and business decision-making. Not to mention, this academic program provides students with a sound conceptual foundation and practical skill in various areas of business.

CONCENTRATIONS



BBA ENTREPRENEURSHIP

The BBA Entrepreneurship is designed to integrate fundamentals of organizing a small business, challenges of entrepreneurship, building the business plan, strategic planning, marketing, financial planning, execution, looking at regulatory environment and concepts of social entrepreneurship. The program aims to provide mentorship to incubate innovative business ideas from the students to successful entrepreneurial venture.

BBA MARKETING

The BBA Marketing is focused on the overall technical and professional preparation in the field of Marketing. With the combination of courses that focus on various aspects of marketing like advertising, sales, consumer behavior, pricing strategies and public relations, students get a platform that leads to next step in their careers.



BBA FINANCE

The BBA Finance is focused on the tools and techniques used in the world of finance. With the combination of courses that focus on various financial concepts from investment decision, corporate finance, financial institutions and market, financial derivatives and commercial bank management, students get a platform that leads to next step in their careers in financial sector.





Presidential Business School (PBS) is a place where you can find an amalgamation of learning. I have completed my BBA from this college with pride. It consist of super supportive and energetic faculties that never fails the expectation. Thereby help us to build all the creative knowledge that makes us stand out of the crowd. Placements are what that you will always find on the door steps so that one gets the best to choose, explore and shine with a bright future. Loved being here because PBS not only gives education but holds the hand till one reaches their destination.

Rupesh Dulal - BBA, Year 2017

The most important aspect studying MBA at Presidential Business School is the Research based teaching and learning modality which I found vastly different from my undergraduate program at Tribhuvan University. The class schedule of Presidential Business School is different from my undergraduate degree from Tribhuvan University. The hybrid class schedule of Presidential Business School provides flexibility for me to engage in other professional tasks and events which broadened my academic as well as professional knowledge. The curriculum and learning outcomes of MBA program at Presidential Business School is vastly different from traditional teaching and learning programs which I experienced during my past academic career.

Besides, the work-based learning outcomes from the MBA program also makes it possible for our academic insights to be integrated with our professional career. The MBA cohort structure at Presidential has allowed me to connect more meaningfully with my colleagues and faculties from various leading industries which helped in building my professional networking.

SUDIP THAPA - MBA-Spring 2019





IT IS THE FUTURE 22



Greetings,

I'm Prestha Khanal, born and raised in the far western part of the country, Nepal. I am currently pursuing my Bachelor of Science Information Technology at Presidential Business School. Talking about my social life, some describe me as an extreme extrovert, while some describe me as an introvert, so I guess I am an Ambivert, because of the balance of extrovert and introvert features in my personality, I present myself as a public speaker.

Undoubtedly, Presidential Business School is one of the leading colleges in Nepal which offers an advanced education system, the classrooms are extraordinary with a pool of technological resources. Presidential Business School has solely adopted the true meaning of the 21st century as the era of "Science and Technology". The coordination of teacher with a student is an underrated aspect however, Presidential has turned this into a beautiful tale that you could barely find anywhere else. Presidential has got something extra to provide students, it's guest lectures on different topics of Information Technology plus courses that contain subjects like composition and academic writings has helped to boost my thinking, learning, and speaking skill. I am blessed to be a part of Presidential Business School, cannot wait to explore more opportunities in the coming days too.

Prestha Khanal - Bn210437 - Bachelor of Science in Information Technology



MASTER OF SCIENCE IN INFORMATION TECHNOLOGY

MScIT Philosophy

Msc IT is a demanding and valuable global qualification in the growing IT industry. Msc.IT offers all aspects of designing, building and managing data, information and communication technologies with intellectual rigor required in the dynamic business world, ecommerce, health, education and others. In addition, the graduates are proficient problem solvers; and offer inputs to unravel the complexities in the IT domains. Eventually, the program produces executive team leaders who are capable of working effectively in the constantly changing IT world.

Over a million IT jobs are created every year and newer opportunities are opened with a good knowledge and understanding for what is essential. Having an advanced knowledge and understanding gives our students an upper hand in the competitive world of business and employment. Opportunities open up into technical, management and information systems as well as possible individual foundations. Graduates who are able to combine these aspects will have opened to them a wide variety of jobs having high demand. Not to mention how IT has now become a well respected profession among professionals.



MScIT at Presidential

The MSc IT at PBS is a two years, 60 credits program designed to champion the need of IT professionals in various service sectors. The program is designed to provide comprehensive knowledge and theoretical understanding of the Information Technology industry and involves the integration of technology, people and strategic business development. It prepares graduates to create Information Technology related computing solutions to complex business problems and apply them to different areas of IT that they come across in their professional capacities and thereby, contribute to the accomplishment of organizational goals.

23

CONCENTRATIONS



DATA SCIENCE AND MACHINE LEARNING

DATA SCIENCE AND MACHINE LEARNING

Data Science provides necessary skills to use scientific methods, processes, algorithms and system to extract ideas, knowledge and visualization through both structural and non-structural data. The aim of this concentration is to provide theoretical as well as practical knowledge on various tools, scientific methods, machine learning algorithms with the goal to discover meaningful information and their visualization from large and complex data. It helps to understand the data and extract meaningful patterns which have a wide range of applications in different fields such as financial services, government, healthcare, retail, insurance, agriculture, robotics, telecommunication etc.

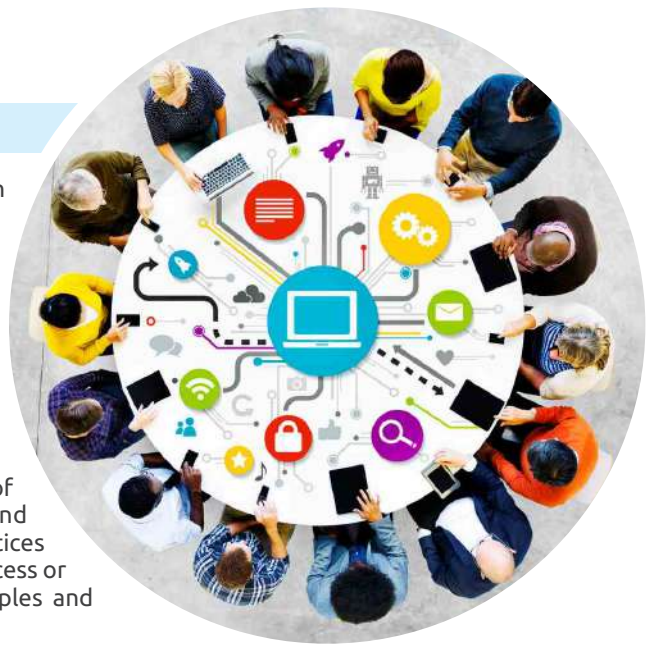
NETWORK AND INFORMATION SECURITY

Information Security Management at PBS provide enough practical skills and knowledge to students in Information Security Management Area Network Architecture @PBS provide enough architectural concepts and practice based on design framework in this specialization area.



NETWORK AND INFORMATION SECURITY

The aim of this concentration is to provide the knowledge of computer network security, cloud security, cybersecurity and information security. Students will learn about a set of best practices intended to keep data and network secure from unauthorized access or alteration. It also provides a broad look at the policies, principles and people used to protect data and networks.



SOFTWARE ENGINEERING & SOFTWARE QUALITY ASSURANCE (SQA)



SOFTWARE ENGINEERING AND SOFTWARE QUALITY ASSURANCE

Software Quality Assurance at PBS is to provide skills, knowledge to students to design quality software, development & implementation. The aim of this concentration is to provide skills, knowledge for producing scalable, reliable and high quality software within the given time and budget constraints. Students learn different aspects of software development in detail such as software configuration management, software quality assurance, microservices architecture, agile methodologies etc.





BACHELOR OF SCIENCE IN INFORMATION TECHNOLOGY

BScIT Philosophy

BScIT is an interdisciplinary program that emphasizes IT and business development. The program produces determined, skilled and qualified human resources to solve real-life IT problems. The students, as IT practitioners, are trained to apply and explore the fundamental IT business development concepts with ethical and social awareness.

This 4-years, 120 credits BScIT degree is a high value investment. The program will allow our students to enter into the technologically advanced world where they will be engaged with various tasks allowing them to have an edge. This course will include designing, programming, knowledge on theoretical systems, networking and the like which are essential for getting into the advanced and dynamic IT sector. As IT has become part of every sector, this course will open a new path and career opportunities for anyone interested in pursuing it.

BScIT at Presidential

Bachelor of Science in Information Technology (BScIT) at PBS is a four year BSc IT course in Nepal, 120 credit program designed to produce middle and supportive level IT practitioners. Accordingly, the program is a unique blend of Information Communication Technology (ICT) which covers a wide range of areas from its theoretical, mathematical and algorithms foundations to leading-edge developments in computer intelligent system, robotics, computer vision, system design and development, bioinformatics, and data-mining/data warehouse. Consequently, PBS firmly believes that the assortment of courses offered in the program will produce competent IT human resources that will not only cater to the needs of both domestic and global markets but will also help IT practitioners to thrive both individually and professionally.

Successively, the degree empowers the students to function in socioeconomic design and development applying the learned skill effectively. Besides, to hone their knowledge and skills, students will work independently in three distinct components as listed below:

- ▶ Develop effective methods to solve any types of computing problems
- ▶ Invent modern global ways to use computers in IT sectors
- ▶ Innovate, Design, Develop, and Implement software according to global trend

Hence, this academic program provides students with a sound conceptual foundation and practical skills in various areas of ICT.





CONCENTRATIONS



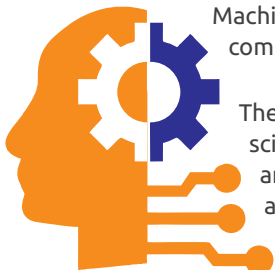
Software and Web Development

SOFTWARE AND WEB DEVELOPMENT

The main objective of PBS is to teach our students using different tools and techniques about the design and development and maintenance of websites in creative ways. The main aim with this module is to provide the design and development tools, and technical skills and knowledge to the students for the development of quality software in accordance with global market trends.

The aim of this concentration is to provide skills, knowledge for producing scalable, reliable and high quality software within the given time and budget constraints. Students learn different aspects of web and software development in detail such as dynamic website development, microservices architecture, agile approach, architectural patterns such as MVC.

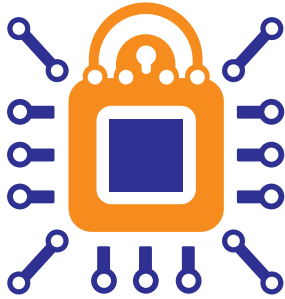
MACHINE LEARNING AND INFORMATION RETRIEVAL



MACHINE LEARNING AND INFORMATION RETRIEVAL

Machine Learning is most rapidly growing in technological fields thereby facilitating the interaction of computer science and statistics with Artificial Intelligence and Data Science at its core.

The aim of this concentration is to provide theoretical as well as practical knowledge on various tools, scientific methods, machine learning algorithms with the goal to discover meaningful information and their visualization from large and complex data. Students learn different machine learning approaches which includes supervised, unsupervised as and reinforcement techniques. It also helps to understand the fundamental concepts of information retrieval which deals with retrieving relevant information from a database for a given query information. Another aspect of this concentration is to understand the semantic web technologies which helps to make internet data machine-readable and smarter.



NETWORK AND CYBER SECURITY

NETWORK AND CYBER SECURITY

Computer networking provides knowledge regarding design and implementation of secure network environment including network architecture , topology, and understanding of various coding languages.

The main objective of PBS with this module is to teach network security, information security, security analysis and vulnerability assessment, digital forensic and cyber law to students.

The aim of this concentration is to provide the knowledge of computer network security, cybersecurity and information security. Students will learn about a set of best practices intended to keep data and network secure from unauthorized access or alteration. It also provides a broad look at the policies, principles and people used to protect data and networks.

MULTIMEDIA

The main aim of PBS is to produce skilled and specialized Human Resources in multimedia business markets. This specialization area focuses on multimedia industries.

The aim of this concentration is to provide knowledge of multimedia technology which deals with computer controlled integration of text, graphics, audio, video, images, animations and any other media where every type of information can be signified, stored, communicated and handled digitally. It helps to enhance the knowledge and skill on different facets of multimedia such as graphics design, drawing, image processing, creation of animation, video editing.



27



DEPARTMENT OF CONTINUING EDUCATION

The Department of Continuing Education (DCE) is an extension of Presidential Business School conceived to offer complementary/integral skill-enhancement (non-credit) to its students, faculty and enthusiast. The Department of Continuing Education consists of two bodies: Student Center and Faculty Center.

DCE – Student Center works on providing skill based sessions from an array of diverse colleges/universities, corporate houses and the like. The courses (some of which include certification from foreign institutions/universities) are designed to meet the requirements associated with working efficiently and competitively in the contemporary corporate world here and abroad. Some of the programs offered includes: Writing and Public Speaking Skills, Soft Skills for the Corporate World, Business Project Management, Job- Specific skills

(facing an interview, writing first-class CVs/resumes, etc.), Industry Specific Training (IST), and the like accompanied by engaging workshops. Led and overseen by the faculty of Presidential Business School, these programs draw largely on the expertise of hired specialists and trainers in the respective areas.

At Presidential, we not only believe in nurturing our students, but thrive to develop our pool of faculties for a better learning experience for the students. Hence, DCE - Faculty Center focuses on overall development of faculties in their Teaching Learning Methodology, Case Study and Writing, and Research Methods. We constantly challenge the traditional pedagogy and persevere to improve the overall teaching learning environment.

28



GUEST LECTURES

PBS is proud to have had the honor to invite famed corporate leaders/trainers, management experts, life-skills trainers, and eminent international professors with the likes of those visiting Harvard and MIT. And, it still unfalteringly continues to explore varied invaluable expertise and insights from corporate practices so as to prepare our graduates for the corporate world and to transform them into true leaders-corporate, social and otherwise. PBS boasts a world-class auditorium with state-of-the-art acoustics to conduct its guest lecture sessions.



Dr. Swarnim Wagle
Former Vice-Chairman



Kulman Ghising
MD, Nepal Electricity Authority

29



Rishi Kapal
STANFORD LEAD ALUMIN



Shrinkhala Khatiwada
Former Miss Nepal



Rukmangath Katwal
Former COAS



Dr. Andrew Wang
Professor, Zhejiang Gong Shang University,
China



Dr. Dai Youn Hang
Professor, Political Economy, Sichuan University,
China



Ruchin Singh
Founder - eSatya



Dr. Julie Ciancio
Dean of College of Education, Westcliff University,
USA



Mr. Gaurav Sharda
Director, Sharda Group



Dr. Gary D. Bruton
Professor, Texas Christian University (TCU), USA

PBS THROUGH THE EYES OF THE FACULTY

30



The MBA Program at PBS aims to provide a solid business background and analytical skills so that students are prepared to be competitive in their professions. The courses are conducted in a participatory basis and students are exposed to a real-life case environment, world-class article reviews besides their regular textbook activities. The quantitative techniques, in particular, are introduced with little mathematical complexity so that students can focus on interpretation and application of issues.

As a faculty member, I am pleased with the educational environment the school offers to its faculty and students. I am assured PBS will be a center of excellence in management education in no time and will create business leaders the world needs.

MR. RABINDRA SILWAL - Capstone Project

As a student, I always had an issue connecting the textbook theories to my practical life. Now, whenever I make my lesson plan for the class I always think of: "How can I connect these theories I am teaching to the practical life so that students can understand this better?". What I like most being a faculty member of PBS is that PBS team and its course guidelines have allowed me to be flexible enough to attempt to go out of the box to make my course practical and rich enough for the students. As a student of Quantitative Economics from the University of Paris 1 Pantheon Sorbonne, I found the blended pedagogy to be best. Thus, I always follow a blended teaching pedagogy in my classroom by bringing in international practices/case studies, local experiences/knowledge, and theoretical concepts.

PRAJOL JOSHI - Economics, Investment Decision



I have been studying and working in the IT sector in Nepal and abroad for two decades. During this journey, it is my great pleasure to be a part of Presidential School where I am involved in various activities for IT program development. Based on my experiences, I notice that education provided by Presidential School is different. Here are a few examples; (1) well designed curriculum – the focus of curriculum is to make students capable and competitive in Academia as well as industry. (2) communication skills enhancement – the Professional Assignment (PA) and Comprehensive Learning Assignment (CLA) help students to gain better understanding of real problems and be able to communicate effectively through written as well as oral presentations. (3) student engagement – in each week, students will engage in different academic activities such as discussion questions, peer reviews, PAs, CLAs to improve their analytical and critical thinking. (4) learning outcome-based examinations – the students will examine based on each week's activities/exams/presentations. The examination is carefully designed to meet the learning outcomes of the course. Moreover, this school not only provides an American degree in a friendly environment but also leverages various aspects of IT knowledge and skills. If you are looking for a good IT degree to become the top IT professional in future, come and join Presidential School.

Suresh Pokharel - Data Science and Analytics



Created effective learning opportunity within the class, peers and other staff members through sharing the experiences, information and relating the context with anticipated learning objectives. Change on DQ model has been a great support for students focusing on research, analysis and summarize the outcomes. Sharing the information, attending business forums, meeting industry leaders, opinion leaders, scholars and professionals and remaining updated on current market trends helps to enhance professional experience. Discussion with peers and other faculty members (formal/informal) also contribute some extent.

Management consultation and services for SMEs and other private enterprises is being core profession for me, always having opportunity to interact with various organizational and managerial issues. These interactions will be helpful for experience both way to me and my fellow students. Having firsthand experience on subject matter is more beneficial to faculty as well as students.

PRAMOD ACHARYA - International Human Resource Management

31

Having the opportunity to be part of the Presidential Business School as an instructor has proven to be an invaluable experience for me. On the program, the concept of Marketing is used as a platform in order to teach students how to look at things in a more structured manner, and to take a broader view of business in general.

SUJAN R. SHRESTHA - Marketing Management and Brand Management



It is a pleasure for me to be part of the PBS faculty for two reasons. First, the students, who venture from all parts of Nepal, are well prepared and motivated, which enables the faculty not only to teach but also to learn from the students as well. It's a feedback loop in teaching and mentoring that cumulatively adds to the wonderful learning experiences at PBS. Second, we have to constantly match up and innovate teaching/research activities with the students' preferences and its precondition to build non-hierarchical mode of learning/relearning/unlearning with them. Step by step, PBS is perfecting interactive teaching methods leading to prepare students for the skills of future.

Sohan Prasad Sha - Business Research, Entrepreneurship and Innovation

Presidential Business School (PBS) is a truly international organization providing everyone a great teaching and learning experience in a very friendly environment. The format and the spirit of the PBS modules are quite unique in many ways. The structure not only allows sufficient time to discuss the topics in depth but also provides opportunity to interact intensively with the students. It has been a pleasure to contribute to this excellent educational initiative.

Dr. RAJESH SHARMA - Financial Management



Presidential Business School provides a supportive environment for students. Learning how to understand, and apply, is a major part of students' academic task. This is both challenging and rewarding in that we make our best effort to help student succeed in their studies. Coming to PBS is therefore an excellent way to enrich your learning outside of the classroom where you are involved fully in the activities of the School (PBS) that helps assimilate management practices from various areas, and solve problems theoretically and practically. Take advantage of this opportunity so that you can fully explore the opportunities that will emerge and help you complete globally. PBS and Westcliff University programs assure you the best of the facilities and quality of teaching to help you materialize your dreams.

Prof. Dr. SATEESH KUMAR OJHA - HRM; Academic Advisor



PBS brings forward an innovative and proactive approach in learning and teaching. With how the courses are structured, the assignments, the discussion questions, the projects all create ample opportunities for the students to explore beyond their books. A perfect blend of theory and relevant applications is what makes teaching at PBS very exciting. It is very encouraging to see how students focus on research to support their opinions which in turn helps them in relating the classrooms learnings with the outside world.

With so much of dynamism in the field of Sales and Marketing, I focus on sharing industry practices, examples and real times cases to help students be ready for the immediate opportunities after college.

Bibek Bhandary - Entrepreneurship

Presidential Business School's initiative to instruct students through standard international pedagogic tools and principles is really commendable. As a faculty member, I feel privileged to be teaching Westcliff-structured curriculum as well as the carefully extracted contents of our own domestic curriculum. The fact that such rare learning is facilitated in sound infrastructure through all imaginable high-tech teaching gadgets is encouraging to any teacher.

It is even more encouraging and heartening to discover that I am in the company of the brilliant faculty—who are in their own right scholars and researchers—and the diligent students who have the ability to reason, and question the authority of orthodox learning inputs and teaching methods.

SAJEEB SHRESTHA - Marketing Management/Marketing Research



PBS is a burgeon college focused on dilating knowledge and skills of the students. The teaching modules can be valuable for students with varying degrees of sophistication. The learning environment is quite different from traditional colleges of Nepal. PBS is not only the place for academics purpose, it is the place where professional partnerships and friendships may commence. All combine to make the PBS modules a distinctive and scrupulously enjoyable educational opportunity. It is a privilege and a pleasure for me, to be the part and contribute to this excellent organization.

SUDEEP LAL BAJIMAYA - Programming Concepts

"Presidential Business School", true to its illustrious history, delivers on its promise of providing a rich, intellectually stimulating world-class business/management education. The academic rigor of PBS, pushes students to the limits of mental endurance, all through ensuring the takeaway is more than expected. The BBA program at PBS is about transformation. It not only imparts knowledge, but reinforces in the students- the spirit of creative action. One is repeatedly confronted by hard questions and challenges which have no easy answers and a deep reflection ensues. It is well and truly a privilege being a part of PBS as a faculty member.

HARIOM SHARMA - Organizational Behavior; Leadership & POM



What does a faculty member look for in a college? A good system, a visionary and professional management team, a good package, liberty to work, a warm environment and talented students. Interestingly, PBS has it all. So I would not hesitate to say that it's an honor to be part of Presidential Family.

SAURAV RAJ VERMA - Faculty, Brand Management, Principle of Advertising



"It is a great privilege for me to be part of Presidential Faculty Team. Being an alumnus (MBA-Fall 2012) of PBS, I truly appreciate Presidential Management Team's continuous effort to seek potential in their students so that they can provide a shoulder to take the institution to newer heights. It's an amazing opportunity and remarkable journey with PBS—from being a student to a faculty member.

In addition to this, Presidential's affiliation with Westcliff University has opened doors to hundreds of students in Nepal who dream of getting an International Degree with a local flavor.

I would like to welcome all the students to be part of Presidential Business School & Westcliff University."

RABIN DHUNGANA - Sr. Technical Specialist, Ncell Pvt. Ltd, Faculty- Ecommerce

From the onset, Presidential has been able to create a unique impression on me with its warm reception of faculty members, putting-students-first attitude and myriad course offering. I reckon that PBS creates a learning climate that favors holistic growth of students. Research-focused assignments, exposure to national and international business and otherwise related matters, and availability of various platforms to challenge oneself are the real actors in transforming lives of students.

So far it has been a productive working experience here.

UJEENA RANA - Critical Thinking and Communication



It is a great honor to be part of PBS Faculty accompanied by renowned academics in their respective fields. The school is unique particularly for delivering quality education since it encourages transfer of practical knowledge by allowing faculty members to apply all modern tools and techniques. PBS facilitates the environment to develop invaluable personal and professional connections, but the most satisfying thing of all is exchange of knowledge with colleagues.

The interactive sessions and faculty meetings provide the impetus to see things through difference lens and exchange ideas. The staff is very efficient and the feedback from students is very positive.

HARIOM GHIMIRE - HR Consultant, ELAM Consultancy, Faculty, Decision Making

As a program leader, it is my honor to welcome you all interested candidates at Presidential Business School (PBS) situated in the hearts of Kathmandu which is offering a qualitative "American International Westcliff University Degree" in technological arena.

At PBS, we strive to offer research based practical degree which are valuable and equivalent to the current job market and we are highly committed in taking constructive actions to produce optimistic, independent, life-long learners and leaders aiming and working to further enhance the technological fraternity in a broader platform for Nepal. For strengthening the practical learning aspect of students enrolled at PBS, it provides an international standard of education - with exemplary faculty, interactive technical classes, guest lectures, workshops, boot camps and internship programs and credit transfer or post-study opportunities.

DOLMA KUMARI SHERPA - Program Manager - Bachelor of Science in Information Technology



PBS has the reputation of being "*one-of-its-kind*" in the business/management education sector in Nepal. The school provides a dynamic and rigorous international education program focused on the theoretical as well as practical imperatives of business/financial world which will definitely propel the school to the zenith of academic excellence and innovation. It is my pleasure to be part of this exciting adventure at PBS.

PADAM SINGH MAHATA- Corporate Finance, Accounting



INDUSTRIAL VISIT

With the objective to get students acquainted empirically with the real business/management phenomena; to experience the manufacturing facility, and to get insights into the production process, PBS organizes industrial visits for its students to various industries of repute, both national and international.

Such visits are not just limited to industries and organizations, but in addition, excursions are organized to familiarize students with the socio-cultural aspects of the nation and to get better understanding of its influence on business environment.

34



WE TEAM



THE PBS FACULTY LIST

35

Aayush Bhattarai

ME, Manufacturing Engineering & Management
University of Technology Sydney, Australia

Achal Raj Pandey

Masters in Arts, Economics
Jawaharlal Nehru University (JNU)

Ajanta Das Dutta

Masters of Business Administration,
Institute of Business Administration & Training, India

Akshar Nepal

Masters in Business Administration
Visveswaraya Technological University, India

Arvind Shakya

Master's in Business Administration
University of Mobile, USA

Arya Bhattarai

MA in English
Christ (Deemed to be University), India

Ashwin Kumar Satyal

Masters in Statistics, TU
Masters in Mathematics, University of Texas, Arlington, USA

Bhanu Dabadi

M.Phil (English), Pokhara University
MBA, TU & EMBA, KU

Bharat Sunam

PGD in Business Administration
Informatics Academy, Singapore

Bibek Bhandary

Masters in Business Administration
Symbiosis Institute of Management Studies

Bikash Gnawali

MA in Anthropology
Tribhuvan University

Chhabi Lal Siwakoti

MA in Mathematics
Tribhuvan University

Dilar Nepal

MA in Economics
Tribhuvan University

Dilip Baral

Masters of Business Administration
Pokhara University

Hari Om Sharma

Masters in Management
Kathmandu University

Hariom Ghimire

Masters in Business Administration
Asian Institute of Technology - AIT

Himalaya Kakshapati

MSc in Software Engineering
University of Hertfordshire, UK

Jayendra Rimal

Masters in Business Administration
Kathmandu University

Kosh Raj Koirala

MA in English & Political Science, TU
Masters in International Relations
University of Leeds, UK

Madhab Prasad Regmi

Masters Degree in Law (LLM)
Tribhuvan University

Mandip Luitel

Masters of Business Administration
Symbiosis International University, SIBM, India

Megharaj Adhikari

MPhil (English)
Tribhuvan University

Niroj Dev Pandey

Masters in Business Administration
Pokhara University

Nitesh Raj Shrestha

Masters in Business Administration
Symbiosis International University

Padam Singh Mahata

Master of Business Administration
Pokhara University

Paras Dotel

Master in Business Administration
Assumption University, Thailand

Prajol Joshi

Msc in Quantitative Economics
University of Paris Pantheon Sorbonne
MBA, Kathmandu University

Pramod Acharya

Masters in Public Administration
Tribhuvan University

Rabin Dhungana

Masters in Business Administration
Presidential Business School

Rabindra Silwal

Msc in Statistic (TU), EMBA (Pokhara University)
MPhil (Finance), Kathmandu University

Rahul Rathi

Masters in Business Administration
Pokhara University

Rajesh Gupta

Master of Business Administration
Pokhara University

Rajesh Sharma

PhD in Management (Accounting & Finance)
Ca' Foscari University of Venice, Italy

Rohit Poudel

Master's in Business Administration
Kathmandu University

Roshan Koirala

Executive MBA
Kathmandu University

Roshan Wagle

Masters of Business Administration
Presidential Business School

Sabitri Rai

MSc in Environment Science
Tribhuvan University

Sajeeb Kumar Shrestha

PhD (in Brand Management)
Tribhuvan University

Sanjay Adhikari

Masters in Business Administration (MBA)
Pokhara University

Sateesh Kumar Ojha

PhD in Management
Tribhuvan University

Saurav Raj Verma

Master of Business Administration
Jamia Hamdard University, India

Shibaji Gurung

MPhil in Sociology
Tribhuvan University

Shyan Kirat Rai

PhD, E-Governance
Indian Institute of Technology (IIT), India,

Sijal Pokhrel

Masters in Environmental Science
Tribhuvan University

Sohan Prasad Sha

PhD (Innovation, Technology & Knowledge Creation)
Jawaharlal Nehru University, India

Subas Manandhar

MSc in Computer Science & IT
Tribhuvan University

Sudeep Lal Bajimaya

Masters in Computer and Information System
Pokhara University

Sujan Raja Shrestha

MPhil (Marketing)
Kathmandu University

Suresh Pokharel

PhD in Data Science, University of Queensland, Australia
ME in Information & Communications Technologies
Asian Institute of Technology, Thailand

Sushanta Gautam

Masters in Business Administration
Pokhara University

Ujeena Rana

M.Phil. in English
Tribhuvan University

Utsab Shrestha

Masters in Business Administration
Symbiosis International University, India

36

PBS SPORTS

37





PBS IT CAREER CONCLAVE 2021

38



PRESIDENTIAL INNOVATION LAB

PBS Innovation Lab is a platform for promoting and supporting Entrepreneurship and Entrepreneurial Preparedness. With Idea, Implementation and Skills at the core, the Lab assists students in nurturing their business ideas. The lab provides the required resources and expertise along with market linkage opportunities and also helps in developing the necessary entrepreneurial skillsets to help the students in pursuing their entrepreneurial journey and turning their business dreams into reality.

The Lab strongly believes in supporting business ideas beyond ideation hence, has a seed fund set up purely to support student led businesses in the initial stages. The lab also engages in community programs and social works. It focuses on continually working towards the society and helps students to engage in the community development programs.

The lab regularly conducts workshops, trainings, webinars, guest lecture sessions and industrial trips and visits to connect the students with the requisites of a successful business venture.

The Lab is a support system dedicated to all members of the PBS family and works towards instilling an entrepreneurial mindset and perspective to all its members which would surely be useful in the diverse walks of lives.



INNOVATION LAB



39



PRESIDENTIAL
CENTER FOR
EXCELLENCE IN
BUSINESS AND
TECHNOLOGY

PRESIDENTIAL CENTER FOR EXCELLENCE IN BUSINESS AND TECHNOLOGY

The Presidential CFE is an initiation of PBS partnered by Teenzclap Futureworks India and Stanford lead alumni. The center brings together National and International Subject Matter Experts, Ivy League Thinktanks, Industry practitioners, Investors, and Learners at a common platform to share and impart skills of the future.

The CFE develops and delivers globally researched and certified opportunities for Learners, Startups, and Corporates which aims at bridging the skills gap between today and the future.

With "Innovation and Implementation" as its core DNA the center promotes knowledge creation, Skill Transfer of the most sought after multidisciplinary academic and practice-oriented opportunities.

With its state-of-the-art knowledge hub, the COE promotes a proper blend of virtual and in-person learning opportunities to rightfully compliment today's and replicate tomorrow's learning practices.



PBS and Franklin Covey Education (Nepal Chapter) has collaborated to provide world renowned and prestigious Franklin Covey college training program exclusively to PBS students. This training program will be delivered to undergraduate and graduate students on below mentioned topics. PBS believes this program will help the students to equip with life learning experience and skills. This program will further help our students with the soft skills required to accelerate their career growth.

40

LIST OF TRAININGS

1. The 7 Habits of Highly Effective People, Foundation

The 7 Habits is the world's best-known personal-leadership framework, synthesising key principles of personal and interpersonal effectiveness.

2. Speed of Trust, Foundations

In this course, students learn about one of the most effective currencies when it comes to creating sustainable relationships, i.e. Trust, both in their personal and professional life.

3. The 4 Essential Roles of Great Leaders

Even in the most turbulent times, there are four roles leaders play that are highly predictive of success. They are essential, because as leaders consciously lead themselves and the teams in alignment with these roles, they lay the foundation for effective leadership.

4. Project Management

This workshop will teach students how to consistently complete projects successfully. They will learn to implement a disciplined process to execute projects and to master informal authority.

5. Meeting Advantage

This course will teach students how to become more aligned with others with a commonality of direction emerging and individual energies harmonising. They learn how to waste less energy, In fact, to create a resonance or synergy during meetings.

6. The 5 Choices to Extraordinary Productivity

This program measurably increases productivity of individuals, teams, and organisations. Students learn to make more selective, high-impact choices about where to invest their valuable time, attention, and energy.

7. Writing Advantage

Students can improve their writing skills immediately as they learn to implement standards that underline quality writing. Even though they may be aware of those standards, they may face challenges applying them consistently.

8. Presentation Advantage

This provides systematic and effective methods to communicate in a way that motivates people to change and take action. The overarching paradigm for consistent presentation success is "Connect."



JOB PLACEMENT CELL AT SCHOOL

The Job Placement Cell at PBS is a department that works to establish and foster a wide range of corporate relations with the reputed business houses in Nepal that make room for internship or/and job placement of our MBA/BBA graduates whenever needed. The Cell is premised on the idea that business knowledge not put in application through internship programs or other kinds of empirical learning will fail to produce business leaders with real business acumen and expertise. It is in sync with this belief then that the JPC is devoted to exploring the best career opportunities available for the PBS graduates who pride in their international

degrees, and competence that is beyond match.

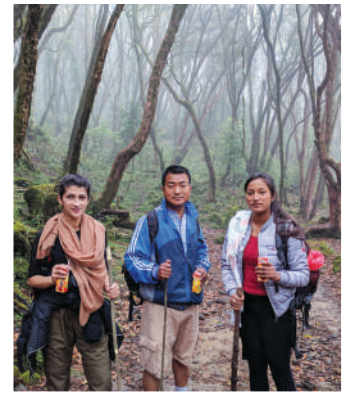
The PBS team at the Job Placement Cell comprises friendly professionals who deliver their specialist input into this cause of the Cell for the welfare of the PBS graduates. We are also proud to be associated with numerous esteemed media and corporate houses in Nepal for placement and internship arrangements. Besides, we cannot be happier as we further contemplate signing of MOUs with more corporate houses so as to increase the prospects of student employability in near future.



41



PBS Tour



PBS *Gala*

43





GRADUATION

44





School of Technology | School of Business
BScIT MScIT | **BBA MBA**



WHAT IS THE MBA/ BBA PROGRAM OF PRESIDENTIAL BUSINESS SCHOOL LIKE?

The MBA at Presidential Business School is a 60-credit, two-year program while the BBA is a 120- credit, four-year program. The curricula in these programs confirm to the international standard upheld by the Westcliff University, and are molded to suit the need of the Nepalese market.

WHAT IS THE MScIT/ BScIT PROGRAM OF PRESIDENTIAL BUSINESS SCHOOL LIKE?

The MScIT at Presidential Business School is a 60-credit, two-year program while the BScIT is a 120- credit, four-year program. The curricula in these programs confirm to the international standard upheld by the Westcliff University, and are molded to suit the need of the Nepalese market.

WHAT ARE THE ELLIGIBILITY CRITERIA?

MBA - Bachelor's degree in any discipline from recognized university of Nepal or from universities around the globe with a minimum CGPA of 2.5 or an equivalent grade scale in undergraduate level.

MScIT - Bachelor's degree in Information Technology or related discipline from recognized university of Nepal or from universities around the globe with a minimum CGPA of 2.5 or an equivalent grade scale in undergraduate level.

* If the applicant has a GPA below the minimum requirement and insists on applying to PBS / Westcliff University, a statement of purpose detailing why they were below the required GPA and what they would do to make sure they are able to improve their GPA in the future must be submitted. This statement will then be reviewed by the University Registrar and Admissions Committee to confirm if the student may continue with their application process.

BBA / BScIT - Highschool/+2/A-Level or equivalent degree in any discipline from recognized board of Nepal or from any other board across the globe recognized by HSEB board of Nepal with a minimum of 2.0 or an equivalent grade scale.

For A- level, 3.5 credit hours is required.

WHAT ARE THE SELECTION CRITERIA FOR MBA/BBA?

Presidential Aptitude and Attitude Test (PAAT) is based on global entrance exam system and is conducted by Presidential Business School affiliated to Westcliff University, USA. Candidates need to complete two phases of PAAT.

1) The written test is intended to assess candidates' aptitude like verbal and quantitative ability, logical reasoning, general awareness, business and economics knowledge, reading and writing skills of the candidate for admission in the undergraduate and graduate programs at PBS. The test includes multiple choice questions and writing section. The exam duration for PAAT is total 2.5 hours for both multiple choice questions and essay writing. PAAT incorporates following components for MBA and BBA admission:

MBA • Verbal Ability • Quantitative Ability • Critical Reading • Logical Reasoning • General Awareness / Business & Economics
 • Writing Ability

BBA • Verbal Ability • Reading Comprehension • Quantitative Ability • Logical Reasoning • General Awareness / Business & Economics • Writing Ability

2) The interview session is intended to assess candidates' speaking and presentation skills along with their confidence and learning attitudes.

WHAT ARE THE SELECTION CRITERIA FOR MScIT/BScIT?

Presidential Aptitude and Attitude Test (PAAT) is based on global entrance exam system and is conducted by Presidential Business School affiliated to Westcliff University, USA. Candidates need to complete two phases of PAAT.

1) The written test is intended to assess candidates' aptitude like verbal and quantitative ability, logical reasoning, general awareness, business and Information Technology knowledge, reading and writing skills of the candidate for admission in the undergraduate and graduate programs at PBS. The test includes multiple choice questions and writing section. The exam duration for PAAT is total 2.5 hours for both multiple choice questions and essay writing. PAAT incorporates following components for MScIT and BScIT admission:

MScIT Verbal Ability Quantitative Ability Critical Reading Logical Reasoning
 General Awareness / Business & Information Technology Writing Ability

BScIT Verbal Ability Reading Comprehension Quantitative Ability Logical Reasoning
 General Awareness / Business & Information Technology Writing Ability



2) The interview session is intended to assess candidates' speaking and presentation skills along with their confidence and learning attitudes.

DO I GET THE INTERNATIONAL CERTIFICATE FROM WESTCLIFF UNIVERSITY IN NEPAL?

Yes, students will be getting globally recognized transcripts and other degree certificates from Westcliff University. In addition, PBS will provide Character Certificates and Recommendation Letters to its graduates.

WHAT DOCUMENTS MUST I SUBMIT FOR MY ENROLLMENT at PBS?

Students must submit the following documents in the order in which they appear underneath:

1. Application form (completed and signed)
 2. Application fees
 3. Academic records
- Secondary and Higher Secondary Schools' Transcripts and Certificates
 - Transcripts and Certificates of Bachelor's Degree (and Master's Degree), or equivalent qualifications of graduate studies with the respective Grade reports
 - Character Certificate
 - English Language Proficiency Certificate; that states the previous degree has been completed in English medium and the student possess good writing and oral communication ability in English language.
 - Citizenship (English Translation Copy, if otherwise) or Passport

HOW WILL MY APPLICATION BE EVALUATED?

Each application received is reviewed in depth by the Admissions Department. When selecting students, we put an emphasis on leadership potential, strong academic ability, communication skills, learning attitude and personal qualities and characteristics.

HOW DO I ADD NEW INFORMATION IF I HAVE ALREADY SUBMITTED MY APPLICATION?

Applicants must submit the additional documents and / or information and should inform the Admissions Department about the updates.

DOES THE REPUTATION/HISTORY OF MY UNDERGRADUATE INSTITUTION OR COMPANY AFFECT MY CHANCES OF BEING ACCEPTED?

Our goal is to admit a class that offers a variety of perspectives. Therefore, we carefully consider individuals from a wide spectrum of academic and work experiences.

WHAT IS ENGLISH LANGUAGE PROFICIENCY LETTER?

English Language Proficiency letter is the letter stating that you have completed your previous degree in English Medium and you possess good writing and oral communication ability in English language. Further, it should also include that college follows English Language as medium of instruction for its Academic Activities. The letter needs to be signed by the Administrator/ Principal/Coordinator.





Bijulibazar, Thapagaun, New Baneshwor, Kathmandu, Nepal | Tel: **01-5244306, 01-5245006**
Email: info@presidential.edu.np | Website: www.presidential.edu.np